

No. ES170908012A005

SHENZHEN KINGFAR SUCTIONCUPS CO., LTD.

深圳市金翼吸盘用品有限公司

NO 23, RONGFU RD, GUANLAN, LONGHUA, SHENZHEN CITY, GUANGDONG, CHINA

广东省深圳市龙华新区观兰街道荣福路23号

(The Submitted Sample Said To Be)

样品信息描述

Sample Name : PVC transparent grains

样品名称 : PVC 透明颗粒

Sample Received Date : Sep 08, 2017

样品接收日期 : 2017.09.08

Testing Completed Date : Sep 18, 2017

测试完成日期 : 2017.09.18

Test Requested : As requested by client, to determine Polycyclic Aromatic Hydrocarbon (PAHs) for compliance with Germany GS Certification and AfPS GS 2014:01 PAK issued by Ausschuss für Produktsicherheit.

测试要求

根据客户要求, 为符合德国 GS 认证和德国消费品安全委员会颁布的 AfPS GS 2014:01 PAK 的要求, 检测所提交样品中的多环芳香烃(PAHs)的含量。

Test Results : Please refer to next page(s).

测试结果

请参看随后页面。

Signed for and on behalf of
Shenzhen EMTEK Co., Ltd.



Manager
Sep 18, 2017

This Test Report is issued by the Company subject to its General Conditions of Service printed overleaf or available on request and accessible at <http://www.emtek.com.cn>. Attention is drawn to the limitations of liability, indemnification and jurisdictional policies defined therein. The results shown in this test report refer only to the sample(s) tested unless otherwise stated and the sample(s) are retained for 30 days only. This Test Report cannot be reproduced, except in full, without prior written permission of the Company.

No. ES170908012A005

TEST RESULTS:

测试结果 :

Test Method: To refer to AfPS GS 2014:01 PAK, the analysis was performed by GC-MS.

测试方法: 参照 AfPS GS 2014:01 PAK, 所得试液由 GC-MS分析检测。

Analyte 被分析物	CAS Number CAS号码	Result (mg/kg) 结果 (mg/kg)	MDL (mg/kg)
		Transparent soft plastic 透明软塑料	
Naphthalene(NAP) # 萘 (NAP) #	91-20-3	0.26	0.2
Acenaphthylene(ANY) 芴烯 (ANY)	208-96-8	ND	0.2
Acenaphthene(ANA) 芴 (ANA)	83-32-9	ND	0.2
Fluorene(FLU) 芴 (FLU)	86-73-7	ND	0.2
Phenanthrene(PHE) 菲 (PHE)	85-01-8	ND	0.2
Anthracene(ANT) 蒽 (ANT)	120-12-7	ND	0.2
Fluoranthene(FLT) 荧蒽 (FLT)	206-44-0	ND	0.2
Pyrene(PYR) 芘 (PYR)	129-00-0	ND	0.2
Benzo[a]anthracene(BaA) 苯并(a)蒽 (BaA)	56-55-3	ND	0.2
Chrysene(CHR) 苝 (CHR)	218-01-9	ND	0.2
Benzo[b]fluoranthene(BbF) 苯并(b)荧蒽 (BbF)	205-99-2	ND	0.2
Benzo[[k]fluoranthene(BkF) 苯并(k)荧蒽 (BkF)	207-08-9	ND	0.2
Benzo[a]pyrene(BaP) 苯并(a)芘 (BaP)	50-32-8	ND	0.2
Indenol[1,2,3-cd]pyrene(IPY) 茚并(1,2,3-cd)芘 (IPY)	193-39-5	ND	0.2
Dibenz[a,h]anthracene(DBA) 二苯并(a,h)蒽 (DBA)	53-70-3	ND	0.2
Benzo[g,h,i]perylene(BPE) 苯并(g,hi)二萘嵌苯(BPE)	191-24-2	ND	0.2
Benzo[e]pyren(BeP) 苯并[e]芘 (BeP)	192-97-2	ND	0.2
Benzo[j]fluoranthene(BjF) 苯并[j]荧蒽 (BjF)	205-82-3	ND	0.2
Total of above PAHs (sum)* 以上多环芳香烃总量 (总和)*	-----	0.26	-----

This Test Report is issued by the Company subject to its General Conditions of Service printed overleaf or available on request and accessible at <http://www.emtek.com.cn>. Attention is drawn to the limitations of liability, indemnification and jurisdictional policies defined therein. The results shown in this test report refer only to the sample(s) tested unless otherwise stated and the sample(s) are retained for 30 days only. This Test Report cannot be reproduced, except in full, without prior written permission of the Company.

No. ES170908012A005

Note: 1. mg/kg = part per million = ppm ND = Not Detected (less than MDL)

备注: mg/kg = 毫克/千克 = 百万分之一 ND = 未检测到(低于 MDL)

MDL = Method Detection Limit

MDL = 方法检测限

2. “*” = Only those PAH components which present in the material over the 0.2ppm are taken into account while calculating the sum of PAHs

“*” = 材料中只有含量大于 0.2ppm的那些多环芳香烃才被计入多环芳香烃总和。

3. “#” = Based on its relative volatility against the other 17 PAH (according to EPA), naphthalene represents a parameter difficult to evaluate in close to skin products. Experience of the testing bodies show that loss of naphthalene as well as secondary contamination can be found. The developed naphthalene result will always only show the momentary situation of the test sample at the time of measurement.

“#” = 基于萘与其它 17种 PAH(根据 EPA)相比, 具有相对挥发性, 它在与皮肤接触类产品中是一种难以评估的物质。可以找到测试机构在测试过程中萘的损失及二次污染的经验。所产生萘的测试结果往往只反应测试样品在测定时的一个短暂的状态。

Remark:

备注: Limit of PAH content according to AfPS GS 2014:01 PAK.

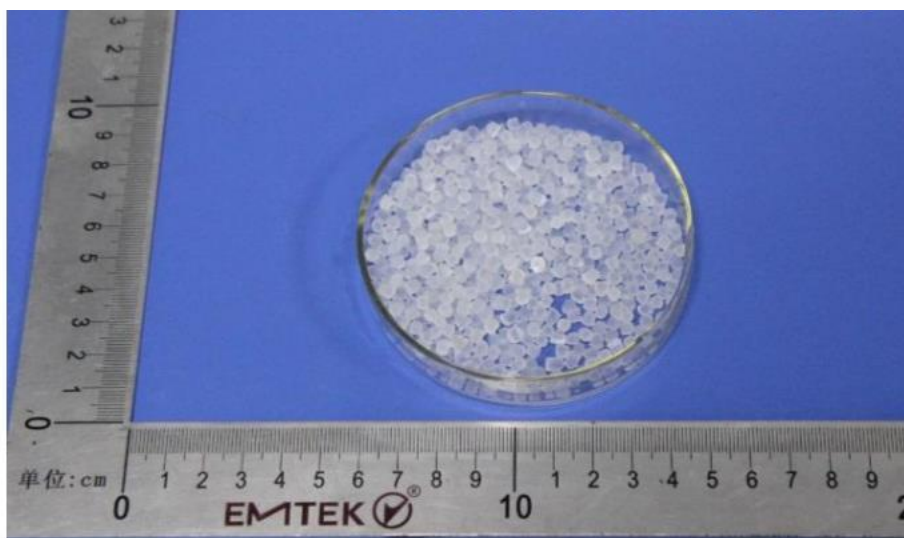
限值参照 AfPS GS 2014:01 PAK.

Parameter 参数	Category 1 第一类	Category 2 第二类		Category 3 第三类	
	Materials, that are intended to be put into the mouth or materials in toys with intended and prolonged skin-contact (longer than 30 s) 要放入口中的材料, 或在玩具中使用并长期与皮肤接触(时间持续30秒以上)的材料	Materials, not covered by category 1, with foreseeable skin-contact of > 30 s (prolonged skin-contact) or short-term repetitive contact with the human skin 第1类不包含的材料, 可预见的与皮肤接触时间>30秒(与皮肤长期接触)或短期反复接触人体皮肤的材料		Materials, not covered by category 1 or 2, with foreseeable skin-contact of < 30 s (short-term skin contact) 第1类或第2类不包含的材料, 可预见的与皮肤接触时间<30秒(与皮肤短期接触)的材料	
		Toys according to Toy Directive 2009/48/EU 玩具指令 2009/48/EU规定的玩具	Other products according to Product Safety Act 《产品安全法》中的其它产品	Toys according to Toy Directive 2009/48/EU 玩具指令 2009/48/EU规定的玩具	Other products according to Product Safety Act 《产品安全法》中的其它产品
NAP	<1mg/kg	<2mg/kg		<10mg/kg	
ANY, ANA, FLU, PHE, ANT, FLT, PYR	Sum<1mg/kg 总和<1mg/kg	Sum<5mg/kg 总和<5mg/kg	Sum<10mg/kg 总和<10mg/kg	Sum<20mg/kg 总和<20mg/kg	Sum<50mg/kg 总和<50mg/kg
BaA, CHR, BbF, BkF, BaP IPY, DBA, BPE, BeP, BjF	For each substance: <0.2mg/kg 对于每一种物质: <0.2mg/kg	For each substance: <0.2mg/kg 对于每一种物质: <0.2mg/kg	For each substance: <0.5mg/kg 对于每一种物质: <0.5mg/kg	For each substance: <0.5mg/kg 对于每一种物质: <0.5mg/kg	For each substance: <1mg/kg 对于每一种物质: <1mg/kg
Sum 18 PAHs (ppm)* 18种 PAH总和(ppm)*	<1 mg/kg	<5mg/kg	<10mg/kg	<20mg/kg	<50mg/kg

This Test Report is issued by the Company subject to its General Conditions of Service printed overleaf or available on request and accessible at <http://www.emtek.com.cn>. Attention is drawn to the limitations of liability, indemnification and jurisdictional policies defined therein. The results shown in this test report refer only to the sample(s) tested unless otherwise stated and the sample(s) are retained for 30 days only. This Test Report cannot be reproduced, except in full, without prior written permission of the Company.

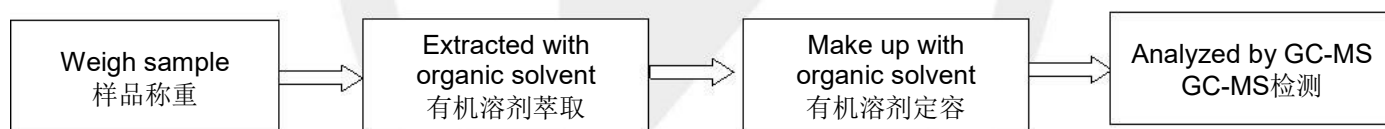
No. ES170908012A005

Photo Appendix
样品照片



TEST FLOWCHART

测试流程图



* * * * * The End * * * * *

* * * * * 结 束 * * * * *